

East Gardens Colliers Wood, SW17 9DH

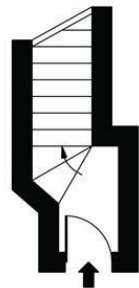
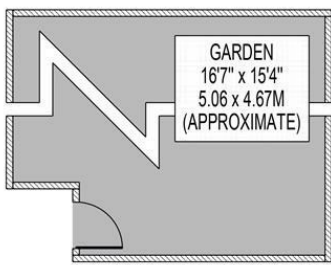
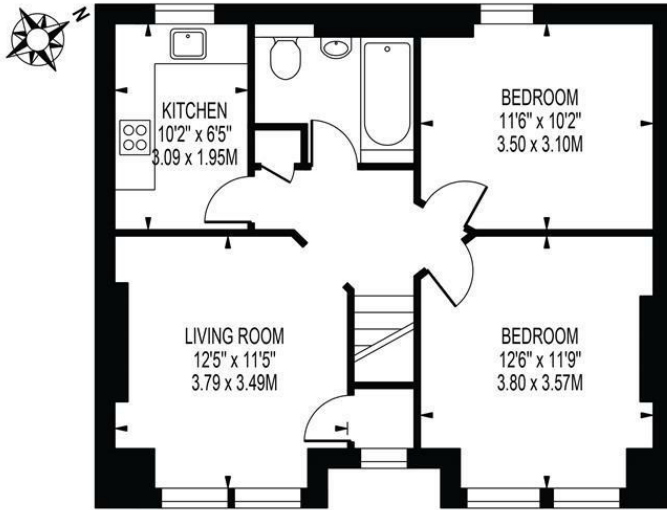
£475,000 Leasehold



A great sized and beautifully presented two double bedroom period garden maisonette occupying the entire first floor of this double fronted detached building. This property includes a well sized reception room, newly fitted kitchen, bathroom with shower and a private rear garden. Conveniently located for local Tube Stations and retail / leisure amenities in Colliers Wood and Tooting. Offered with no onward chain, a new 215 year lease and the potential to extend into the roof space subject to the necessary consents.

EAST GARDENS

APPROXIMATE GROSS INTERNAL FLOOR AREA: 625 SQ FT - 58.10 SQ M



GROUND FLOOR

GROUND FLOOR ENTRANCE

FOR ILLUSTRATION PURPOSES ONLY

THIS FLOOR PLAN SHOULD BE USED AS A GENERAL OUTLINE FOR GUIDANCE ONLY AND DOES NOT CONSTITUTE IN WHOLE OR IN PART AN OFFER OR CONTRACT. ANY INTENDING PURCHASER OR LESSEE SHOULD SATISFY THEMSELVES BY INSPECTION, SEARCHES, ENQUIRIES AND FULL SURVEY AS TO THE CORRECTNESS OF EACH STATEMENT. ANY AREAS, MEASUREMENTS OR DISTANCES QUOTED ARE APPROXIMATE AND SHOULD NOT BE USED TO VALUE A PROPERTY OR BE THE BASIS OF ANY SALE OR LET.



- Two Double Bedrooms
- First Floor Maisonette
- Private Garden
- Close To Transport
- No Onward Chain With Potential To Extend Into The Loft
- New Lease 215 Years
- EPC Rating : D
- Merton Council Tax Band : C
- Lease : 215 Years From 24 June 2024
- Service Charges (Per Annum) : £305.25 (As Per April 2024). No Ground Rents

Energy Efficiency Rating

	Current	Potential
Very energy efficient - lower running costs		
(92 plus) A		
(81-91) B		
(69-80) C		
(55-68) D		
(39-54) E		
(21-38) F		
(1-20) G		
Not energy efficient - higher running costs		
	61	77
England & Wales	EU Directive 2002/91/EC	

For Free Mortgage Quote and Best Mortgage Rates, call an Ellisons Mortgage Advisor on 020 8544 0518



Although these particulars are believed to be correct, their accuracy is not guaranteed and they do not form part of any contract.

Celebrating 30 years of successful Sales and Lettings in Merton

